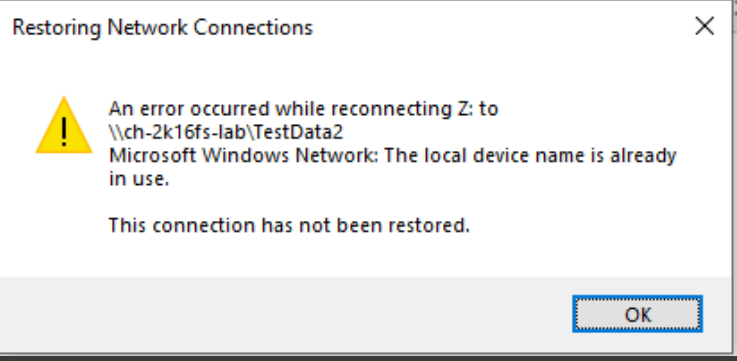
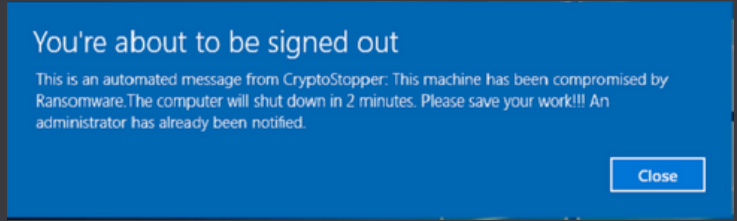


RANSOMWARE ALERT!

Server Edition

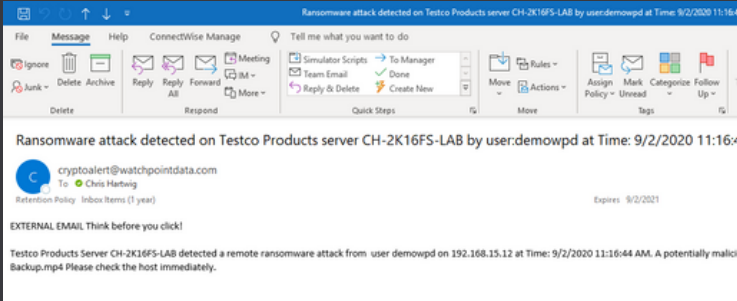
SHUTDOWN ALERT!

Alert tells you a ransomware attack was detected against the server! Please save your work. This workstation will shutdown in two minutes!



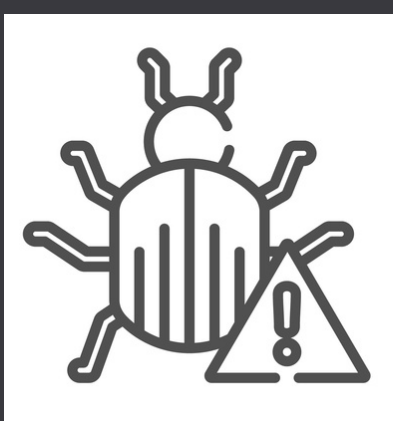
ISOLATE FROM SHARE

The infected workstation is isolated from the server share stopping the ransomware attack



NOTIFICATION

Email alert notifies admin that attack has occurred and has been stopped before the admin was aware an attack took place



REMEDiate

Clean the workstation of malware or reimage the workstation before putting back on the LAN

BACK TO WORK

- Remove workstation from isolation to resume access to share
- Windows Firewall
 - Inbound Rule
 - CryptoStopper
 - Scope Tab
 - Remove Isolated IP address
 - Click Apply

